

# S-2150 House connection valve

With PRK thrust screw couplings

05-01/1039000251/01.2007 **5**

Page 1 of 2

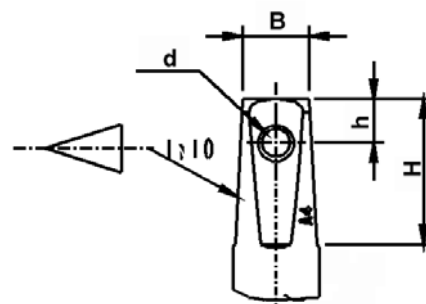
## Application and features

- Bruksområde: Water and sea water
- No external bolts
- Blow-out proof o-ring for bonnet connection
- 3 o-rings for stem sealing
- Stem of acid proof steel
- Low operation torque
- High strength
- Høy styrke
- Lockable, bayonet connection to the valve stem S-1850



## Technical description

- Pressure class: PN 16
- Max. working temperature: 70°  
For drinking water 20°C
- Test pressure Open valve, 24 bar. Closed valve, 17,6 bar
- Stem: Non-rising. With tapered stem end. Pitch 1:20. See table.
- Connection: With PRK retaining nuts for PE-pipes
- Vacuum: -0,8 bar
- Approvals: GNFS (N), SITAC (S)
- Tested and approved for sea water:  
Det Norske Veritas Industry AS, report no.: R794135/R795019

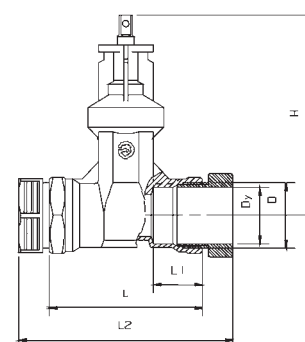


Dimensions stem top:

DN	B	H	h	d
20-50	12,3	27	8,1	5,5

## References, dimensions and performances

DN/D mm	Dy mm	H mm	L mm	L1 mm	L2 mm	Weight kg	Kv m <sup>3</sup> /h	Z	Esco no.	NRF no.
20/G 1	25	169	110	33	142	1,6	43	0,2	21500025	338 1206
25/G 1¼	32	169	118	37	162	1,7	69	0,2	21500032	338 1208
32/G 1½	40	169	130	38	183	1,8	69	0,2	21500040	338 1211
40/G 2	50	183	140	45	196	2,3	80	0,2	21500050	338 1213
50/G 2½	63	208	150	50	219	3,8	221	0,2	21500063	338 1215



Kongsberg Esco AS can accept no responsibility for possible errors in catalogues, brochures and other printed material. Kongsberg Esco AS reserves the right to alter its products without notice. This also applies to products already on order provided that such alterations can be made without subsequent changes being necessary in specifications already agreed. All trademarks in this material are property of the respective companies. Kongsberg Esco and the Kongsberg Esco logotype are trademarks of Kongsberg Esco AS. All rights reserved.

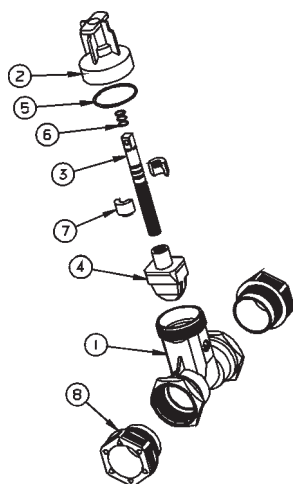
## S-2150 House connection valve

With PRK thrust screw couplings

05-01/1039000251/01.2007 **5**

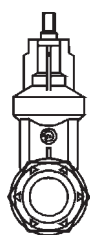
Page 2 of 2

### Material specification

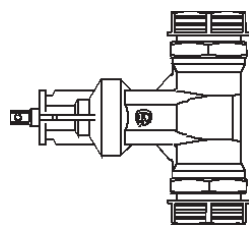


Pos	Detail	Materials
1	Body	Dezinkfree brass (DZR)
2	Bonnet	Dezinkfree brass (DZR)
3	Stem	Acid proof steel
4	Wedge	Brass CR / Rubber (NBR)
5	O-ring	Rubber (NBR)
6	O-ring	Rubber (NBR)
7	Stem bushing	Dezinkfree brass (DZR)
8	Thrust screw	Dy 25-60: Acetal plastic Dy 63: Dezinkfree brass (DZR)

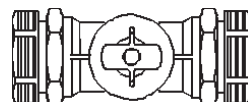
### Installation



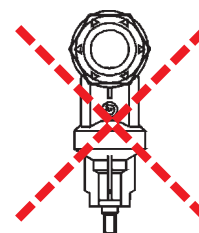
Recommended



Possible



Possible



Not recommended

### Accessories and other variants

#### Accessories:

S-2110 Handwheel  
S-1850 Spindle extension  
S-1830/S-1835/S-1840 Operating box

#### Other variations:

S-2151 With standard pipe threads  
S-2160 With PRK thrust screw coupling and male threads  
S-2170 With PE-pipes  
S-2186 With integrated Esco-sit compression fittings